



SAINT THOMAS CHURCH

Jenni Gillard Architectural Lighting Designers Pty Ltd
IN ASSOCIATION WITH DAVID TOOHEY ARCHITECT

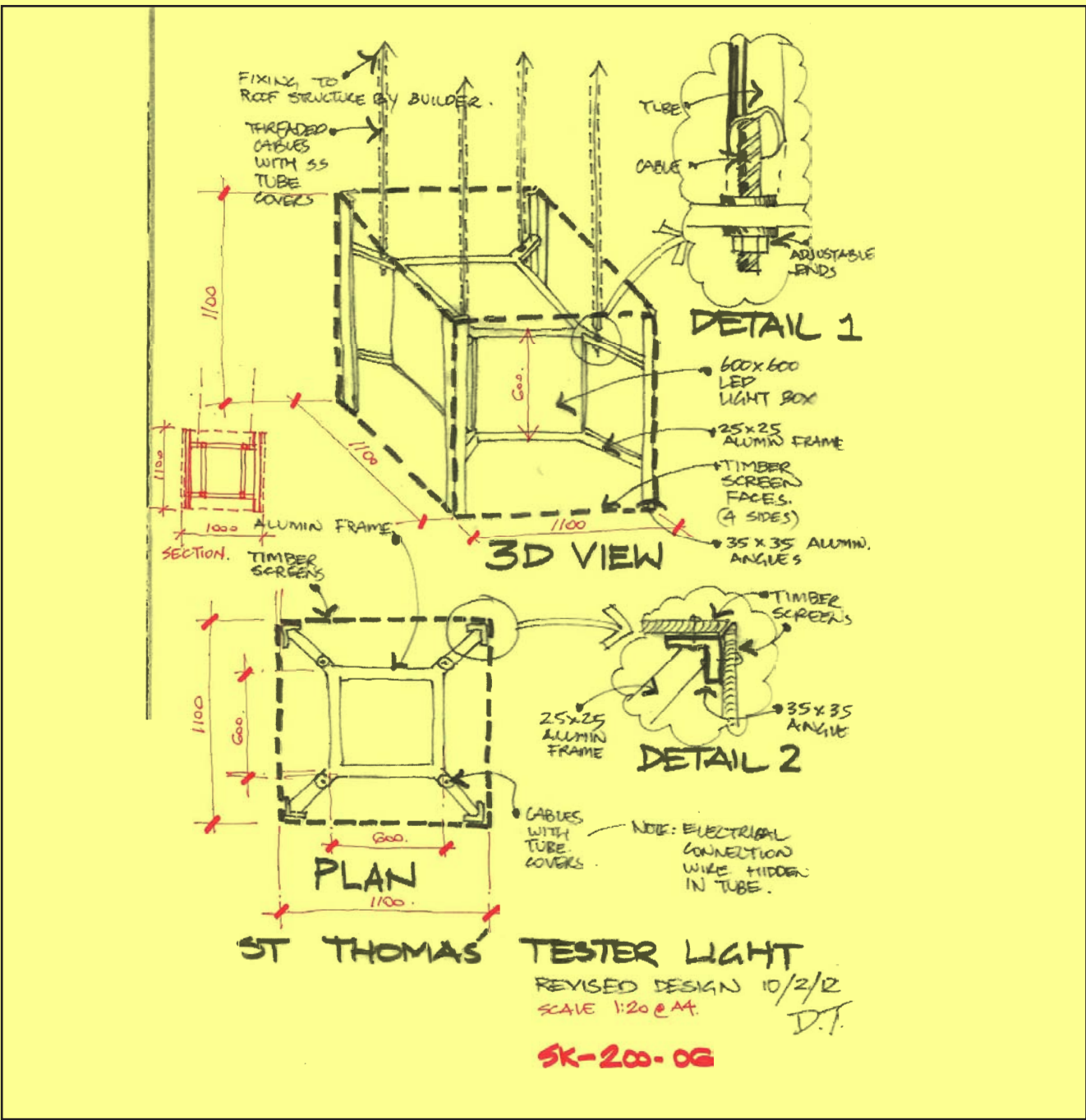
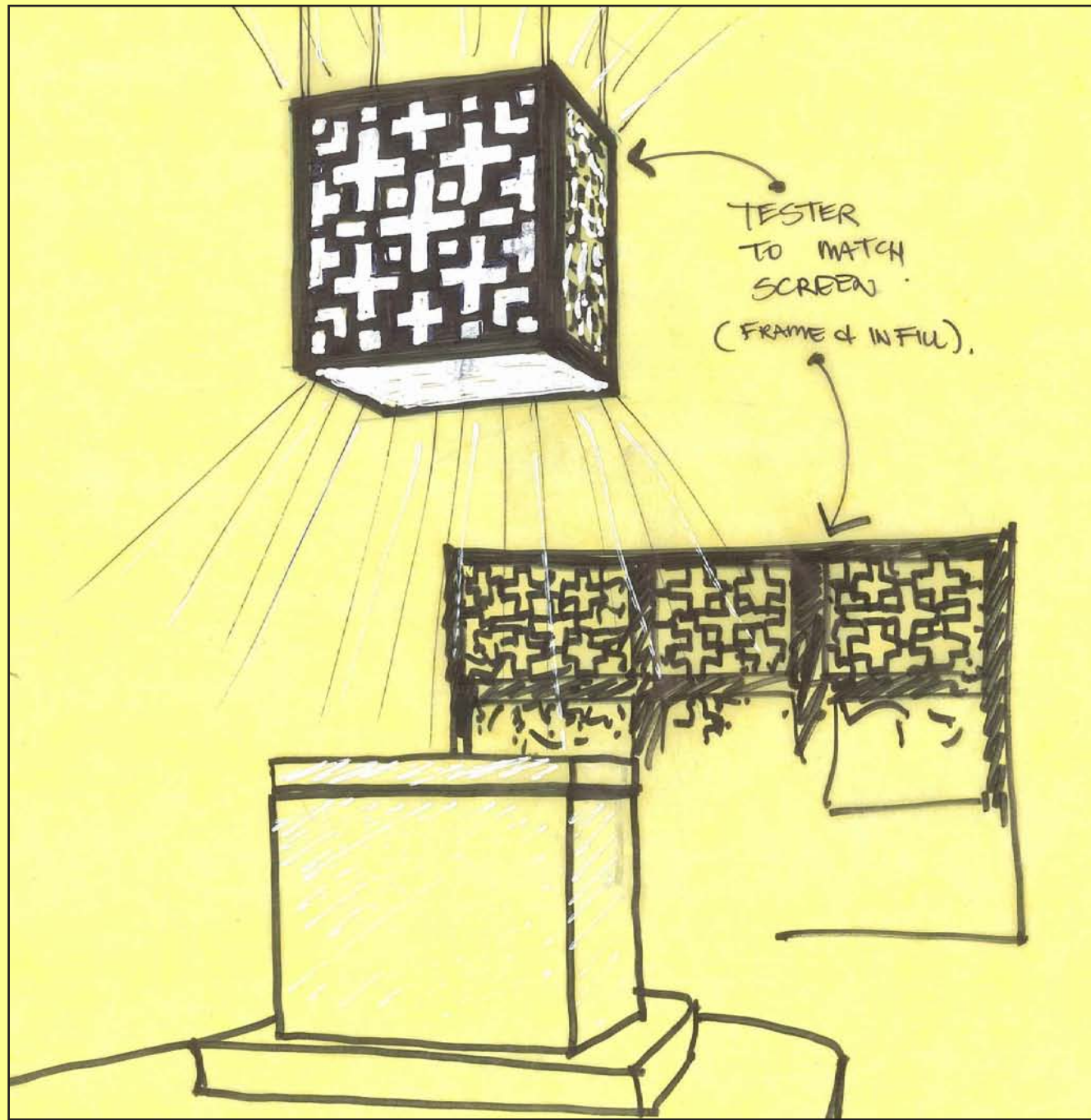
Traditionally a canopy or 'tester' is suspended above the altar as a mark of honour and to provide a visual focus to the altar. Complimenting the altar cube a tester cube was created to full fill the requirements of honour and focus, and also to light the altar top or 'mensa'. To complete a trinity of forms the white cube also appears as the central component of the Baptismal Font and St Thomas' Church.

The brief for St Thomas' Church required a re-ordered liturgical setting to facilitate 'church in the round' seating. This arrangement allows parishioners to gather around the altar as a community. As a result the altar requires equal faces in all directions and the white marble cube (and the Tester Light) was adopted as the perfect solution. This Design of the Tester Light is the combining of a Tester (canopy) and a Light into a single Luminaire Form. This has arguably never been done before.

The Tester Light floats above the altar and the faces are adorned with timber screens of a Greek Cross pattern, the screens are fabricated from Queensland maple to match the existing timber 'signature' of St Thomas' interior. The Tester Light a Cube within Cube within a Cube, signifying the Holy Trinity.

The Light Form (LED) creates a diffused sensibility. The Tester light bathes and saturates and achieves more than required light levels. Embracing the Human Spirit with Naked Light, as seen in Daylight illumination.

The five sided LED light cube is embraced by a customised aluminium frame and illuminates at 5500 kelvin temperature with 85 colour rendering. To achieve our design vision much testing, researching and experimentation comparing between fluorescent and LED was done... "Daylight is what We Evolved Under" Warren Julian.



Architect David Toohey

Designer Jenni Gillard

Designer Dooley Zantis

Lighting Product Zenith Lighting, LED Lightworks

Timber Specialist Mead Murphy

Acrylic Specialist Model Consultants International

Builder Beech Constructions

Structural Engineer BG Group